



Scale: 1" / 100'
Measured Depth Log

Well Name Lone Ranger SWD Well #1

Location Section 7, Block 36, T2N

State Texas

County Martin

Country USA

Rig Number Ensign 224

API Number 42-317-42648

AFE # LoneRangerSWD#1

Geographic Region Midland Basin

Field Spraberry

Spud Date 11/18/2019

Drilling Completed 12/7/2019

Surface Coordinates Lat: 32.362191
Long: -101.948021

Bottom Hole Coordinates TBD

Ground Elevation 2847

K.B. Elevation 2872

Logged Interval 9750 To 13,180'

Total Depth 13,180'

Formation Ellenburger

Type of Drilling Fluid WBM

Operator

Company Taurus Water Midstream



Geologist

Name Zachary Bordovsky & Kehinde Opatola

Company TERRA GUIDANCE, LLC

Address 67 W.FLOYD AVE.
SUITE 105
ENGLEWOOD, CO 80110



Color Coding

Oil	Condensate	Gas
Note	Core	Pressure
Error	Water	Seal

Rock Types

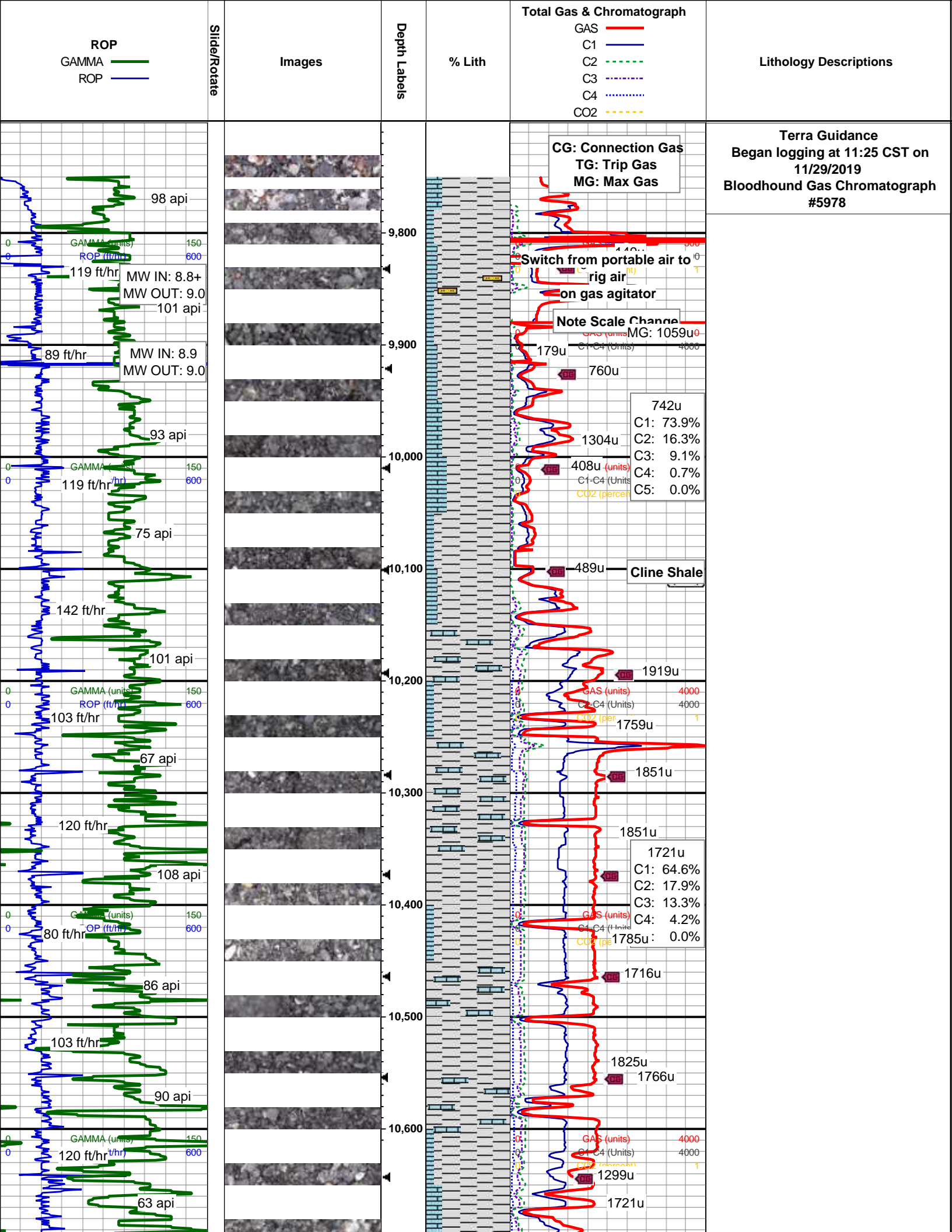
<ul style="list-style-type: none"> UNKNOWN ANHYDRITE BENTONITE BRECCIA CEMENT CHALK CHERT CLAY CHOKE SAND CLAYSTONE 	<ul style="list-style-type: none"> COAL CONGLOMERATE DOLOMITE GRANITE GYPSUM IGNEOUS LIMESTONE SIDERITE or LIMONITE MARLSTONE 	<ul style="list-style-type: none"> METAMORPHIC NO SAMPLE SALT SALT- PEPPER SAND SANDSTONE SHALE SHALE COLORED SHALE GRAY SHALY SANDSTONE 	<ul style="list-style-type: none"> SHALY SILTSTONE SILTSTONE SILTY SHALE TILL TUFF WELDED TUFF
---	---	--	--

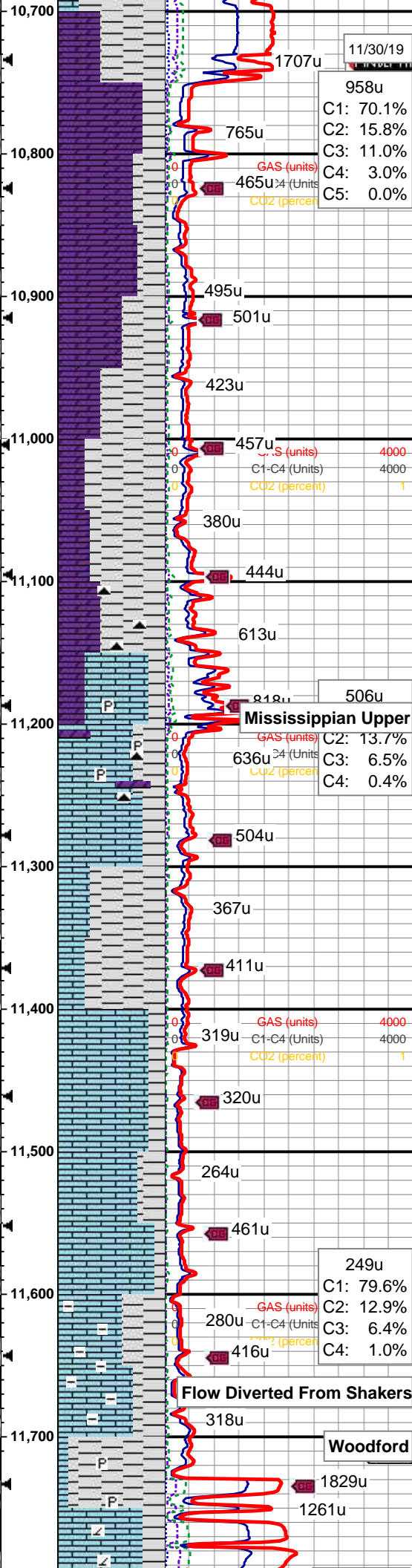
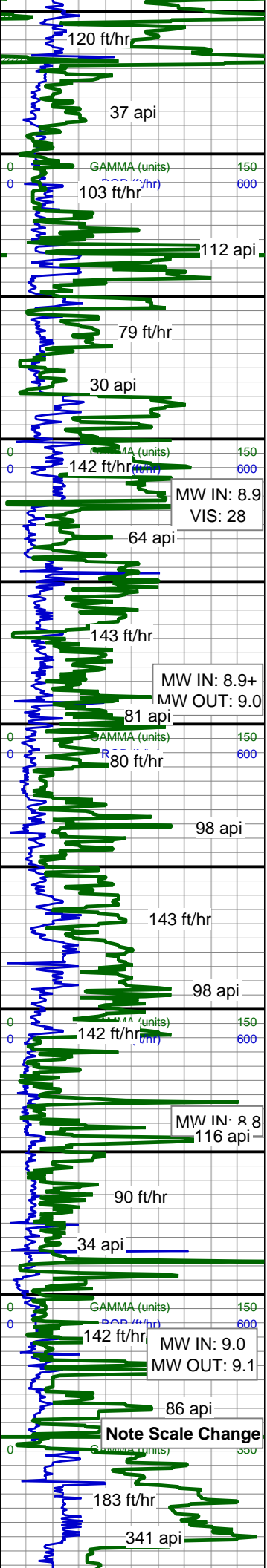
Accessories

<h3>Fossils</h3> <ul style="list-style-type: none"> ALGAE AMPHIPORA BELEMNITE BIOCLASTIC BRACHIOPOD BRYOZOA CEPHALOPOD CORAL CRINOID ECHINOID FISH FORAMINIFERA FOSSIL 	<ul style="list-style-type: none"> GASTROPOD INOCERAMUS OOLITE OSTRACOD PELECYPOD PELLET PISOLITE PLANT REMAINS PLANT SPORES SCAPHOPOD STROMATOPOROID 	<ul style="list-style-type: none"> ARGILLITE GRAIN BENTONITE BITUMENOUS SUBSTANCE BRECCIA FRAGMENTS CALCAREOUS CARBONACEOUS FLAKES CHTDK CHTLT COAL - THIN BEDS DOLOMITIC FELDSPAR FERRUGINOUS PELLET FERRUGINOUS GLAUCONITE GYPSIFEROUS 	<ul style="list-style-type: none"> HEAVY MINERAL KAOLIN MARLSTONE MINERAL CRYSTALS NODULES PHOSPHATE PELLETS PYRITE SALT CAST SANDY SILICEOUS SILTY TUFFACEOUS 	<ul style="list-style-type: none"> BENTONITE STRINGER COAL STRINGER DOLOMITE STRINGER GYPSUM STRINGER LIMESTONE STRINGER MARLSTONE (CALC) STRG MARLSTONE (DOL) STRG SANDSTONE STRINGER SHALE STRINGER SILTSTONE STRINGER Claystone Stringer
	<h3>Minerals</h3> <ul style="list-style-type: none"> ANHYDRITIC ARGILLACEOUS 		<h3>Stringer</h3> <ul style="list-style-type: none"> ANHYDRITE STRINGER 	

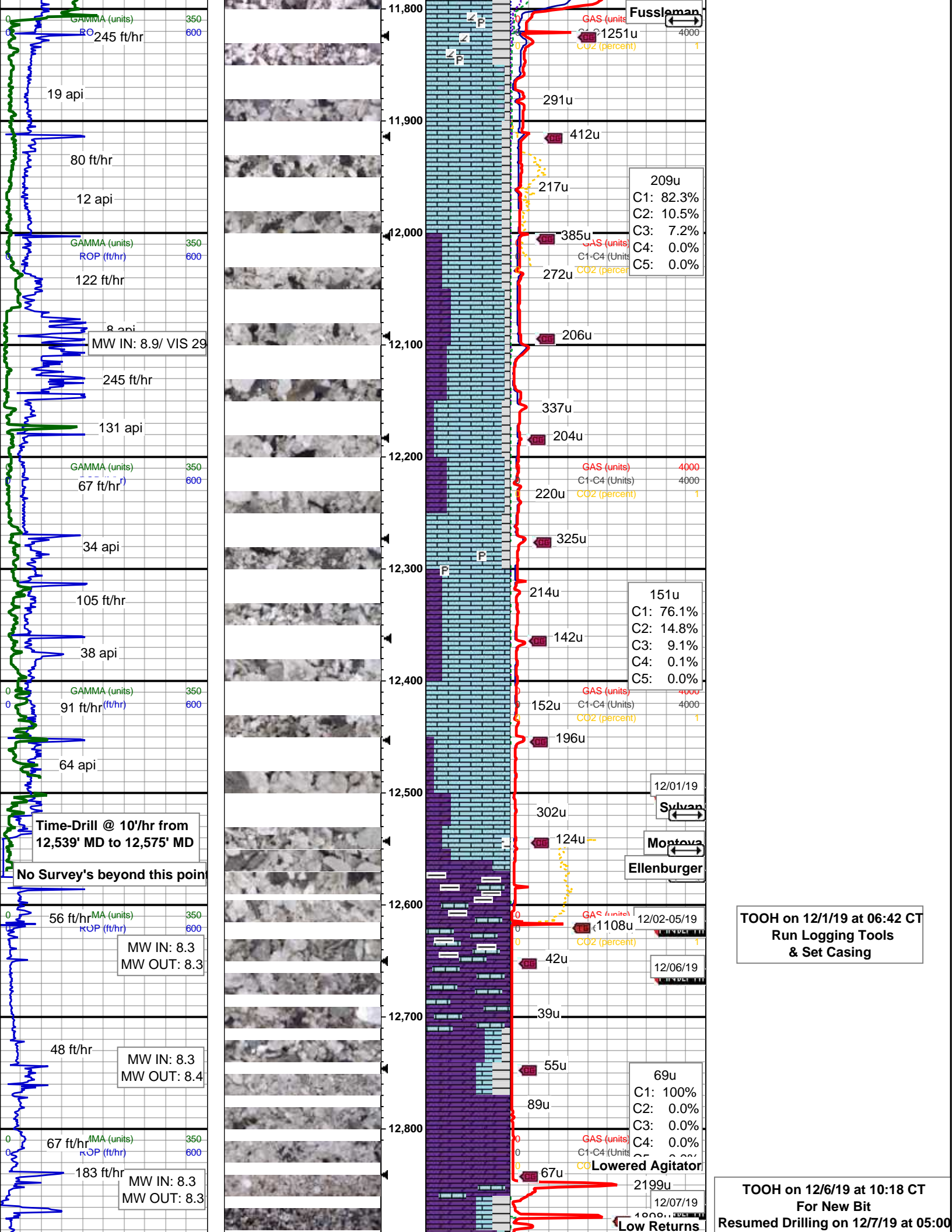
Other Symbols

<h3>Oil Show</h3> <ul style="list-style-type: none"> DEAD EVEN QUESTIONABLE SPOTTED STAINING 	<ul style="list-style-type: none"> MOLDIC ORGANIC PINPOINT VUGGY 	<ul style="list-style-type: none"> FAULT FORMATION TOP GAS SHOW MN DEPTH NORMAL FAULT OIL SHOW OVERTURNED STRATA REVERSE FAULT SIDEWALL CORE (LEFT) SIDEWALL CORE (RIGHT) SLIDE SURVEY TRIP GAS 	<ul style="list-style-type: none"> WIRELINE TESTED - LEFT WIRELINE TESTED - RT 	<h3>Rounding</h3> <ul style="list-style-type: none"> ANGULAR ROUNDED SUBANG SUBRND 	<ul style="list-style-type: none"> E EARTHY FX FINELYXLN GS GRAINSTONE L LITHOGRAPHIC MX MICROXLN MS MUDSTONE PS PACKSTONE WS WACKESTONE
<h3>Porosity</h3> <ul style="list-style-type: none"> E EARTHY FENESTRAL F FRACTURE INTERCRYSTALLINE INTEROOLITIC 	<h3>Engineering</h3> <ul style="list-style-type: none"> BIT CONNECTION (LEFT) CONNECTION (RIGHT) CONNECTION GAS CORE - LOST CORE - RECOVERED DST INTERVAL 		<h3>Textures</h3> <ul style="list-style-type: none"> BS BOUNDSTONE C CHALKY CX CRYPTOXLN 	<h3>Sorting</h3> <ul style="list-style-type: none"> M MODERATE P POOR W WELL 	





MUD DUMP



Fussleman

GAMMA (units) 350
ROP (ft/hr) 600
245 ft/hr
19 api

80 ft/hr
12 api

GAMMA (units) 350
ROP (ft/hr) 600
122 ft/hr
8 api
MW IN: 8.9/ VIS 29

245 ft/hr
131 api

GAMMA (units) 350
ROP (ft/hr) 600
67 ft/hr
34 api

105 ft/hr
38 api

GAMMA (units) 350
ROP (ft/hr) 600
91 ft/hr
64 api

Time-Drill @ 10'/hr from 12,539' MD to 12,575' MD
No Survey's beyond this point

56 ft/hr
MW IN: 8.3
MW OUT: 8.3

48 ft/hr
MW IN: 8.3
MW OUT: 8.4

67 ft/hr
183 ft/hr
MW IN: 8.3
MW OUT: 8.3

GAS (units) 4000
C1-C4 (Units) 4000
CO2 (percent) 1
1251u

291u

412u

209u
C1: 82.3%
C2: 10.5%
C3: 7.2%
C4: 0.0%
C5: 0.0%

217u

385u

272u

206u

337u

204u

220u

325u

214u

151u
C1: 76.1%
C2: 14.8%
C3: 9.1%
C4: 0.1%
C5: 0.0%

142u

152u

196u

302u

124u

1108u

42u

39u

55u

89u

67u

2199u

69u
C1: 100%
C2: 0.0%
C3: 0.0%
C4: 0.0%
C5: 0.0%

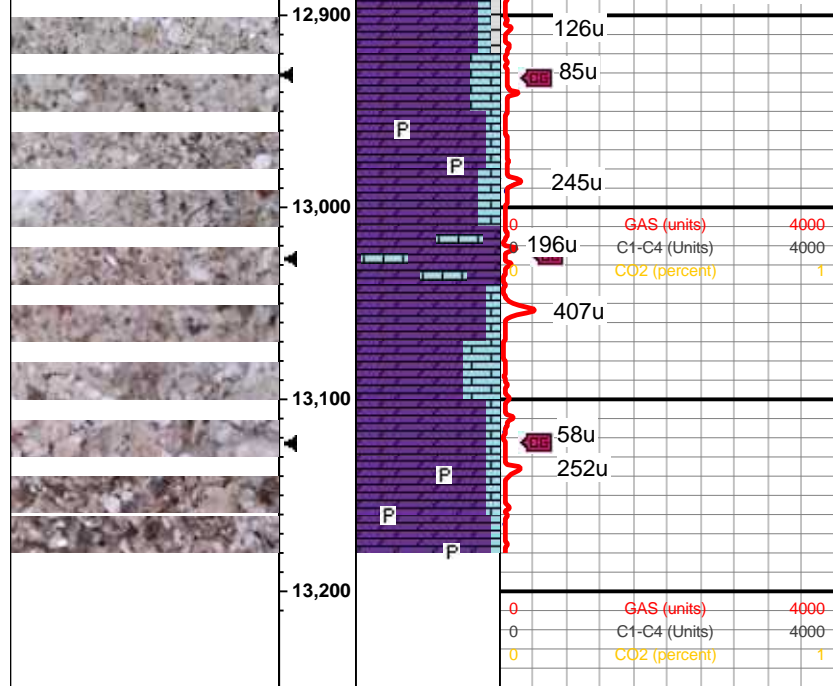
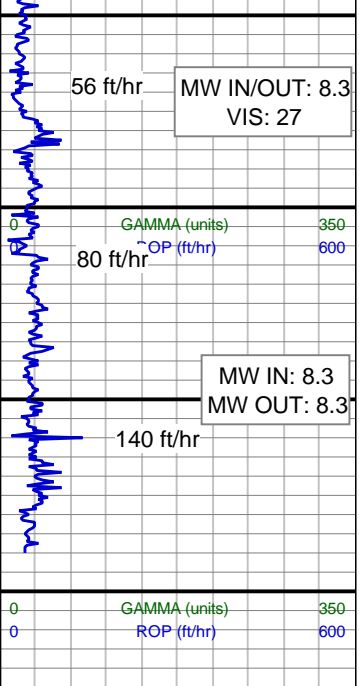
Lowered Agitator

Low Returns

12/01/19
Sylvan
Montana
Ellenburger

TOOH on 12/1/19 at 06:42 CT
Run Logging Tools
& Set Casing

TOOH on 12/6/19 at 10:18 CT
For New Bit
Resumed Drilling on 12/7/19 at 05:00



Well TD 13,180' MD
 on 12/7/2019 at 13:47 CST
 TERRA GUIDANCE